



Job title	Assistant Professor in Applied Linguistics	Job family and level	Research and Teaching Extended Level 5
School/ Department	School of English	Location	University Park Campus

Purpose of role

Initially, this Assistant Professor post is based for the first four years with Horizon (www.horizon.ac.uk) a Research Institute at the University of Nottingham and engaged in Digital Economy Research and is aimed at supporting an early career researcher transitioning into a permanent academic post within the School of English. The role holder will be able to focus on research, gradually transitioning to a typical Assistant Professor work pattern over four years. There will be a carefully managed staged contribution to the School's undergraduate and postgraduate teaching programme, and assistance with the administration in the School.

Horizon was established in 2009 to explore the potential of ubiquitous and context-aware computing to enhance our growing digital economy. It draws together multiple research teams from a broad range of disciplines from across Nottingham and from external industrial, as well as other academic partners, to investigate how digital technology may enhance the way we live, work, play and travel in the future.

The Assistant Professor will undertake innovative, original research in the field, manage and support members of the Horizon team in their research activities and take on other related duties, under the guidance of the Horizon Director.

Applications are invited from candidates with a specialism in Digital Second Language Acquisition, i.e. focusing on digital products and processes that underlie second language acquisition of English with expertise in two or more of the following areas: instructed second language acquisition theories; TESOL language teaching methodology; individual differences of the language learner; second language vocabulary acquisition; second language testing and ELT materials development.

	Main responsibilities (Primary accountabilities and responsibilities expected to fulfil the role)	% time per year
1	Research activities: To undertake a programme of high quality impactful research within Horizon, which involves: preparation and submission of external grant applications to external bodies to fund new research and or	40%

	<p>extension to existing projects; execution of projects; supervision of research students and associates; dissemination of findings to the wider academic community; maintain, or develop, an international reputation through published work in world leading peer-reviewed venues.</p> <p>Preparation of research presentations and papers to disseminate results, attending and presenting at internal/external seminars and national/international conferences</p>	
2	<p>Project leadership: Defining research objectives in collaboration with senior colleagues; setting up and managing resources in order to achieve research outputs; organising and conducting meetings with research staff to clarify objectives; development of experimental programme, data collection and analysis strategies; development of team work plans/timetables for research and support staff; communication of progress to Line Manager, communication with project sponsors; development and implementation of quality assurance measures; recruitment of research and support staff; development of job specifications and interview tasks.</p> <p>Line management: Day to day line management of research fellows and students, liaison with support staff, identification of areas of staff development/training</p>	20%
3	<p>Teaching and Learning</p> <p>Develop and deliver high quality teaching and assessment on core, subsidiary, and optional modules in relevant areas, including School team-taught modules, and dissertation and project supervision at undergraduate and masters level, on both live and distance learning programmes.</p> <p>Develop efficient and effective delivery/assessment/feedback mechanisms</p> <p>Design course modules and/or programmes of study and develop new content, concepts and technology for innovative teaching. Provide curriculum leadership within own area of expertise making appropriate use of new technologies, co-ordinating with others to ensure student needs and expectations are met. Contribute to the accreditation of courses and quality control processes.</p> <p>Coach and support student learning, developing their knowledge and skills, and be responsible for the pastoral care of students within a specified area, dealing with sensitive and confidential issues</p> <p>Comply with the University of Nottingham Teaching Quality assurance standards and procedures. Ensure teaching quality assessment and assessment of progress and other information is maintained and supplied to the University as required.</p>	20%
4	<p>Contribute fully to the recruitment, supervision and examination of doctoral students to support the submission of their thesis within a maximum of 4 years (or equivalent for part-time students) except in exceptional circumstances.</p>	15%
5	<p>Other</p> <p>Contribute to the work of the School in relation to its international campuses in China (UNNC) and Malaysia (UNMC) including occasional working visits to UNNC and UNMC as well as development of strategies in relation to internationalisation in the School and University more generally and University more generally</p>	5%

	<p>Be responsible for the safe conduct of work within work area and teaching responsibilities ensuring that the School's arrangements for compliance with the University Safety Policy are implemented.</p> <p>Carry out a full administrative role within the School (including completion of PGCHE if required; convening, moderation, and assessment of modules, and involvement in committee work and working parties)</p>	
--	--	--

Person specification

	Essential	Desirable
Skills	<ul style="list-style-type: none"> • Ability to consistently develop own research area • Flexibility to collaborate with colleagues • Ability to teach/supervise at undergraduate and postgraduate levels • The capacity to teach across a range of undergraduate and postgraduate topics in the broad field of applied linguistics • Specialist research skills and techniques. • Organisation skills. • Excellent verbal and written communication skills. • Excellent presentation skills • Ability to work to deadlines and prioritise tasks • Ability to develop own research area and flexibility to collaborate with colleagues • Ability to work well in a team 	<ul style="list-style-type: none"> • Statistical and analytic software skills. • Project management and leadership skills.
Knowledge and experience	<ul style="list-style-type: none"> • Significant relevant postdoctoral research experience. • Teaching experience in relevant subjects at HE level • Evidence of the ability to make a strong contribution to future REF, or other research assessment exercises • Recent track record of publishing or otherwise disseminating work • Experience of conducting interdisciplinary research 	<ul style="list-style-type: none"> • Evidence of potential to generate research grant income and projects. • Participation in academic and associated professional networks • Experience of both writing and teaching MA distance learning materials. • Experience of obtaining external funding. • Time management skills. • Experience of large-scale multidisciplinary research projects.

Qualifications, certification and training (relevant to role)	<ul style="list-style-type: none"> • PhD or equivalent in an area relevant to Applied Linguistics 	<ul style="list-style-type: none"> • 30 credits of a Postgraduate Teaching Certificate or Education-related Masters, or equivalent Higher Education Academy Fellow status or equivalent • Knowledge of interdisciplinary research approaches.
--	--	---



The University of Nottingham is focused on embedding equality, diversity and inclusion in all that we do. As part of this, we welcome a diverse population to join our work force and therefore encourage applicants from all communities, particularly those with protected characteristics under the Equality Act 2010.

Our staff body is currently under-represented in terms of Black, Asian and minority ethnic members, and so we would particularly welcome applicants from these backgrounds.

Please note that as part of its commitment to maintaining the highest academic standards in teaching and learning, the University expects all newly appointed or promoted Lecturers (unless exempt) to complete 30 credits of the Postgraduate Certificate in Higher Education (PGCHE) Course.

Informal enquiries may be addressed to Professor Svenja Adolphs, svenja.adolphs@nottingham.ac.uk

Please note that applications sent directly to this email address will not be accepted.

Further information about the School is available at: <http://www.nottingham.ac.uk/english>

Selection Process

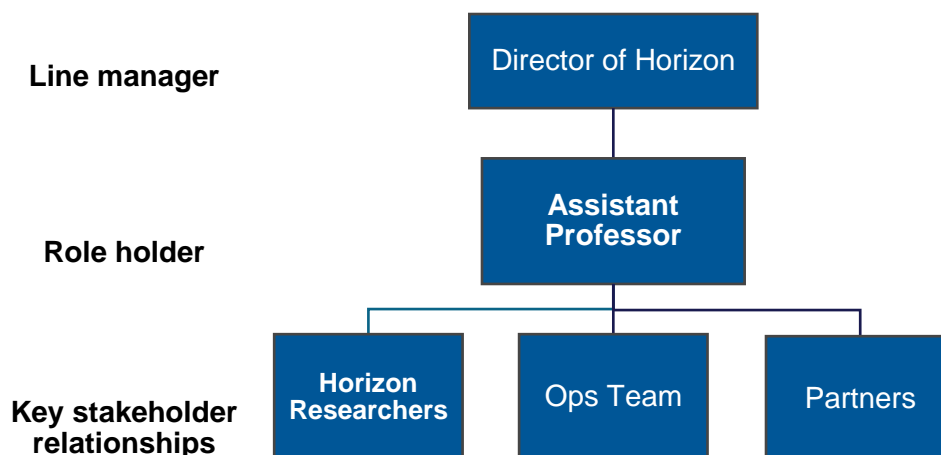
The interview process will include a presentation of research and a formal interview.

Expectations and behaviours

The University has developed a clear set of core expectations and behaviours that our people should be demonstrating in their work, and as ambassadors of the University's strategy, vision and values. The following are essential to the role:

- Valuing people** Is always equitable and fair and works with integrity. Proactively looks for ways to develop the team and is comfortable providing clarity by explaining the rationale behind decisions.
- Taking ownership** Is highly self-aware, looking for ways to improve, both taking on board and offering constructive feedback. Inspires others to take accountability for their own areas.
- Forward thinking** Driven to question the status quo and explore new ideas, supporting the team to “lead the way” in terms of know-how and learning.
- Professional pride** Sets the bar high with quality systems and control measures in place. Demands high standards of others identifying and addressing any gaps to enhance the overall performance.
- Always inclusive** Ensures accessibility to the wider community, actively encouraging inclusion and seeking to involve others. Ensures others always consider the wider context when sharing information making full use of networks and connections.

Key relationships with others



Information about Horizon – Digital Economy Research

At Horizon we are dedicated to researching, promoting and championing the potential of ubiquitous digital technology, looking at the challenges of providing a new generation of personally meaningful experiences that use the traces we leave behind when we interact with mobile, internet and other digital technologies. Core to our vision is the idea that future products will be hybrids of both the

digital and the physical – as physical products become increasingly augmented with digital capabilities that capture their provenance, to software that enables them to adapt their behaviour.

Applying a user-centred approach we work in collaboration with leading academic, commercial, public and third sector partners across a broad spectrum of subjects. We do this in a manner that respects personal privacy and enriches rather than replaces the range of social interactions we engage with at work and at home, to deliver exciting impact to shape the digital economy of tomorrow.

<https://www.horizon.ac.uk/>

Information about English Language and Applied Linguistics teaching and research in the School of English

At the University of Nottingham, the focus of work in English language and linguistics has primarily been on:

- cognitive, psychological, sociolinguistic and stylistic analysis of language and discourse
- corpus linguistics
- professional communication with specialisation in business and health communication
- literary theory and literary linguistic text analysis/stylistics and cognitive poetics
- teaching English as a second/foreign language
- interdisciplinary approaches to a wide range of issues in applied linguistics and SLA research

Nottingham's distinctive approach is focused on the social and cultural contexts in which the English language is acquired, produced and understood, and on the psychological factors that underlie these processes.

The Interdisciplinary Ethos of Nottingham

Applied Linguistics is an interdisciplinary area of research, touching as it does on aspects of psychology, sociology, education, modern languages, literature, historical studies, and computational science. The Centre for Research in Applied Linguistics (CRAL), which includes a number of interdisciplinary research groups, is housed in the School of English. CRAL's infrastructure supports corpus-based research, discourse-based sociolinguistic data analysis, multi-modal data capture and analysis, eye-tracking, and behavioural response time experiments.

Web-based Distance Learning

Over the last few years, the School has invested in the development of web-based e-learning materials, a pioneering move led by staff in the English Language and Applied Linguistics section and now involving all areas of the School. We currently offer several of our Masters courses as web materials (MAs in Applied Linguistics, Applied Linguistics and English Language Teaching, English Studies and Health Communication, Modern English Language, and Literary Linguistics and pathways through the Applied English programme), and we currently have over 200 distance students based in over 40 countries across the globe.

Existing Research Strengths

Research within Nottingham's School of English is concentrated in the Centre for Research in Applied Linguistics (CRAL). Research groups within CRAL include the Psychology of the Language Learner Research Group (directed by Zoltán Dörnyei), the Bilingualism Research Group (directed by Kathy Conklin and Walter van Heuven in Psychology), Literary Linguistics group (directed by Peter Stockwell and Violeta Sotirova), Health Language Research Group (directed by Kevin Harvey, Svenja Adolphs and Louise Mullany), Linguistic Profiling for Professionals (LiPP) (directed by Louise Mullany) and the Corpus Linguistics Workshop.

We have a sister research centre, CRALC (Centre for Research in Applied Linguistics, China) at The University of Nottingham's Ningbo campus (UNNC).

Teaching areas in English Language and Applied Linguistics

Teaching within the field of English Language and Applied Linguistics currently includes Undergraduate modules such as *The Psychology of Bilingualism and Language Learning*, *Teaching English as a Foreign Language*, *Language Development*, *Language and the Mind*, *Discourse and Society*, *Texts in a Digital World*, *Cognitive Poetics*, *Stylistics and Literary Linguistics*. We have four popular Masters programmes taught on site within the School (*MA Applied Linguistics*, *MA Applied Linguistics and ELT*, *MA Literary Linguistics* and an innovative *MSc Communication and Entrepreneurship* (co-taught with the University's Business School). We also contribute to an interdisciplinary MA in English Studies. In addition, we run a highly successful suite of Masters programmes by Distance Learning (see above) and we provide supervision to a thriving postgraduate research student community of around 40 students.

English Language and Applied Linguistics Staff in the School of English

The field of English Language and Applied Linguistics has seen strong growth on several fronts in the past five years. Investment by the School and the University in this area of teaching and research has both strengthened research profiles and helped considerably in meeting School and University international recruitment targets. The English Language and Applied Linguistics area of the School of English currently includes the following members of staff:

Chairs - **Svenja Adolphi**, **Kathy Conklin**, **Zoltán Dörnyei**, **Louise Mullany** and **Peter Stockwell**;
Associate Professors - **Kevin Harvey**, **Lucy Jones** and **Violeta Sotirova**;
Assistant Professors/Lecturers - **Sarah Grandage**, **Daniel Hunt**, **Christine Muir**, **Pawel Szudarski**, **Dominic Thompson** and **Jason Whitt**;
Research Fellows - **Jacqueline Cordell** and **Jai Mackenzie**;
Teaching Associates - **Malgorzata Chalupnik** and **Jessica Norledge**.

In addition, we have research support from Emeritus Professor **Mike McCarthy** and Honorary Professor (**Katie Wales**).

General Information

The School of English

The School is organised internally across four sections, covering Modern Literature, Medieval Language and Literature, Drama and Creative Writing, and English Language and Linguistics. Our undergraduate degrees are taught across these areas, ensuring that all Nottingham students have the opportunity for the widest possible education in English language, linguistics, literature and culture. This broad, rich coverage is a strong characteristic of the teaching ethos of the School.

The School of English was one of the first departments to be established when the University was formally opened in 1881 and is located on the ground floor of the Trent Building, University Park Campus. The Schools of English in Ningbo and in Malaysia are an integral part of the University's English provision, with many specific courses in common and a 2+2 degree between Nottingham and China.

At present, there are currently 63 staff in the research and teaching job family. We offer both Single and Joint Honours courses at BA level, a range of taught postgraduate Masters courses (many through web-based Distance Learning) and research supervision in all areas. We have approximately 950 undergraduate students, 95 undertaking on-site Masters programmes and 200 on distance learning Masters. There are approximately 70 full- and part-time research students working towards the higher degrees of PhD within a range of topics, with most full-time members of staff engaged in postgraduate supervision. These figures relate to our Nottingham campus. We also have Schools of English at the University of Nottingham campus in Ningbo, China and at the University of Nottingham in Malaysia.

Equality, Diversity and Inclusion (EDI) in the School of English

The school endeavours to create an environment that allows staff and students to thrive and excel in their education and career alike. We support equality, diversity and inclusivity in the school and are working hard to ensure a better representation of staff and students across all of our activities.

The School is engaged in a number of EDI initiatives including decolonising the curriculum in English studies:

<https://www.nottingham.ac.uk/english/about/equality-diversity-and-inclusion/decolonising-the-curriculum-in-english-studies-at-uon.aspx>

Teaching in the School

Undergraduate teaching

English Language and Applied Linguistics

Medieval Studies (including the history of the language)

Literature from 1500 to the present day (including literary theory)

Drama and Performance

Creative Writing

The curriculum emphasises a wide range of disciplines within the general areas of English, in which Year 1 operates as a foundation year introducing the students to these disciplines, while in Years 2 and 3 students progressively select a range of specialist modules.

Masters Programmes - onsite

The School offers a number of specialist on-campus taught Masters programmes including Applied Linguistics, Applied Linguistics and English Language Teaching; Literary Linguistics; English Literature; and Creative Writing. In addition, the MA in English Studies allows students to combine modules from different areas, particularly language, literature and medieval studies. We also have a joint Masters programmes with the Nottingham University Business School, the MA in Communication and Entrepreneurship and have an MRes in Medieval Languages and Literatures.

Masters Programmes - web-based distance-learning

Over the last few years, the School has invested in the development of web-based learning materials, a pioneering move led by staff in the English Language and Applied Linguistics section and now involving all areas of the School. Within the new Applied English scheme we are able to offer 'pods' of study that can be configured into one of 10 possible Masters programmes, including MA English Literature, MA Modern and Contemporary Literature, MA Applied Linguistics and MA Medieval Englishes and many others. We currently have over 200 distance students based in over 40 countries.

Research in the School

The following research groupings in the School form a focus for lectures, conferences, seminars, grant applications and other collaborative activities:

Centre for Research in Applied Linguistics (CRAL) is an interdepartmental research unit comprised of scholars from the School of English, Computer Science, Mathematics, Psychology, and Education. The School also houses two of the largest corpora of spoken English and spoken business English in the world, both funded in co-operation with Cambridge University. Academic and research staff from the School form part of a recently established professional communication research cluster and business unit, *Linguistic Profiling for Professionals* (LiPP), based in CRAL to provide bespoke consultancy and training.

Centre for Regional Literature and Culture (CRLC) involves a series of fresh initiatives relating to regional cultures at both local (i.e. East Midlands) and national levels. The Centre encompasses work

on Byron, Southey, the interdisciplinary Landscape, Space, Place Research Group, and the DH Lawrence Research Centre.

Centre for the Study of the Viking Age (CSVA) fosters, develops and coordinates research into all aspects of the Viking Age, with special emphasis on Scandinavian contacts with the British Isles, and on literary and linguistic sources for the period.

Institute for Name-Studies (INS) was established in September 2002 as an umbrella for the various research activities of the *English Place-Name Society* (founded 1923) and the *Centre for English Name-Studies* (established 1992). The Institute for Name-Studies houses the library and research resources of the *English Place-Name Society*.

The School has been successful in attracting substantial funding from The Leverhulme Trust, the AHRC, the British Academy, ESRC, EPSRC, the Wellcome Institute, JISC and other external bodies. The University has a number of internal research funding schemes and support for both internal and external funding applications is provided by the University's Centre for Advanced Studies (CAS).

Careers and Employability

The School of English was awarded a prestigious Teaching Development Grant by the Higher Education Academy for our project, 'Embedding Employability in English: work related learning in the creative industries', to address two key challenges:

- How we can create opportunities for our students to develop vocational skills and experience work-related learning in the context of the particular skills and knowledges being developed through their subject-based study of English
- How we can ensure that such work-related activity is appropriately framed and supported to ensure 'learning' takes place, particularly as the numbers of students involved increases.

The School's Director of Employability oversees our work to develop placements, volunteering and employability opportunities for all students. The School's volunteering programme includes community and dementia reading groups, and the Literacy Support Project and the Viking and Anglo Saxons for Schools projects working with local secondary and primary schools.

The City of Nottingham

Nottingham is an attractive, vibrant and prosperous city, that attracts people from all over the UK. Culturally, it was awarded UNESCO City of Literature status 5 years ago; it has good theatres, an arena which attracts both national and international performers and a range of historical interests relating to subjects such as the lace industry, Lord Byron and DH Lawrence.

Nottingham is also known for sport, being the home of Trent Bridge Cricket Ground, Nottingham Forest and Notts County Football Clubs, the National Water Sports Centre and the Nottingham Tennis Centre. There is excellent public transport with buses and a tram service, a good network of roads with easy access to the M1 and the A1, a fast frequent rail service to London and other major cities. Nottingham East Midlands Airport is eighteen miles away.

The city is set within a county of outstanding natural beauty which includes Sherwood Forest, Wollaton Park, lively market towns and wonderful historic buildings, and is close to the southern Peak District. Housing is relatively inexpensive by UK standards and, in addition to the two Universities, there are excellent local schools and colleges.

To find out more about Nottingham, please use the following links:

Nottingham County Council – Tourism <http://www.experiencenottinghamshire.com/>

University of Nottingham <http://www.nottingham.ac.uk>

My Nottingham (information on schools, term dates, school transport etc.):

<http://www.nottinghamcity.gov.uk>

The University and the Faculty

The University of Nottingham has award-winning campuses in the United Kingdom, China and Malaysia and hosts a truly global academic community in all three countries. The University was placed 99th in the world (2021 QS World University Rankings) and placed 8th in the UK for research power (REF2014). The University has also been recognised as delivering Gold standard in the Teaching and Excellence Framework (TEF).

The Faculty of Arts is a large and diverse Faculty encompassing the School of Cultures, Languages and Area Studies (CLAS), School of English, and School of Humanities. The Faculty is home to associated Centres and Institutes, and the lead member of the Midlands4Cities AHRC Doctoral Training Partnership.

The research carried out through the Faculty is of the highest standard: in REF2014 more than 97% of research was of international quality, with 72% graded as 'world-leading' or 'internationally excellent' and five of the 11 units submitted were in the top 10 by research power.

We place a high value on research-led teaching and are committed to excellence in education and student experience.

For further information about the University, see:

<http://www.nottingham.ac.uk>

For campus maps and other information, see:

<http://www.nottingham.ac.uk/about/campuses/maps.php>

June 2021