



Job title	Teaching Associate in Applied Linguistics (part time, fixed term)	Job family and level	Research and Teaching Level 4
School/ Department	English	Location	Trent Building, University Park Campus

Purpose of role

The School of English is seeking to appoint a part-time Teaching Associate in Applied Linguistics (18 hours per week.) This is a fixed term appointment from 1 September 2021 to 30 June 2022.

The successful candidate will be specialised in Second Language Acquisition, with expertise in two or more of the following areas: instructed second language acquisition theories; TESOL language teaching methodology; individual differences of the language learner; second language vocabulary acquisition; second language testing and ELT materials development. They will undertake teaching in the area of Applied Linguistics in the School of English. Candidates should have a PhD in Applied Linguistics or in a closely related area, as well as having language teaching experience. Evidence of the ability to teach at undergraduate and postgraduate levels on live and distance programmes is essential, covering (preferably more than one of) the above areas.

Mentoring towards further career progression will be offered throughout the period of the post.

	Main responsibilities (Primary accountabilities and responsibilities expected to fulfil the role)	% time per year
1.	<p>Teaching and supervision</p> <ul style="list-style-type: none"> Undergraduate teaching on core and optional modules in relevant areas, including School team-taught modules Coach and support student learning and progression, developing knowledge and skills, and be responsible for the pastoral care of students within a specified area, dealing with sensitive and confidential issues. Responsible for and comply with the University of Nottingham teaching quality assurance standards and procedures. 	75%

2.	Research <ul style="list-style-type: none"> Pursue high-quality teaching-related scholarship with the purpose of contributing to the research-led teaching in the School 	15%
3.	Administration <ul style="list-style-type: none"> Carry out a full administrative role within the School (including moderation, and assessment of courses, and involvement in committee work and working parties). Assist the School in achieving admissions targets by contributing to the School's programme of activities in relation to recruitment, outreach and widening participation. 	5%
4.	Other <ul style="list-style-type: none"> Be responsible for the safe conduct of work within the work area and teaching responsibilities ensuring that the School's arrangements for compliance with the University Safety Policy are implemented. Any other duties commensurate with a teaching focused role in the School 	5%

Person specification

	Essential	Desirable
Skills	<ul style="list-style-type: none"> Proven research and scholarship skills such as will inform research-driven teaching Flexibility to collaborate with colleagues Ability to teach modules at undergraduate levels in required areas of delivery The capacity to teach across a range of periods and approaches in the field of applied linguistics Excellent verbal and written communication skills. Excellent presentation skills Ability to work to deadlines and prioritise tasks 	<ul style="list-style-type: none"> Evidence of administrative skills
Knowledge and experience	<ul style="list-style-type: none"> Teaching experience in relevant subjects at HE level 	<ul style="list-style-type: none"> Experience of teaching distance learning Experience in pastoral work
Qualifications, certification and training (relevant to role)	<ul style="list-style-type: none"> PhD (or equivalent) in a relevant area of applied linguistics 	<ul style="list-style-type: none"> 30 credits of a Postgraduate Teaching Certificate or Education-related Masters, or equivalent Higher Education Academy Fellow status or equivalent

Special requirements	<ul style="list-style-type: none"> • Ability to develop own research area and flexibility to collaborate with colleagues • Ability to work well in a team 	
-----------------------------	---	--



The University of Nottingham is focused on embedding equality, diversity and inclusion in all that we do. As part of this, we welcome a diverse population to join our work force and therefore encourage applicants from all communities, particularly those with protected characteristics under the Equality Act 2010.

Our staff body is currently under-represented in terms of Black, Asian and minority ethnic members, and so we would particularly welcome applicants from these backgrounds.

Please note that as part of its commitment to maintaining the highest academic standards in teaching and learning, the University expects all newly appointed or promoted Lecturers (unless exempt) to complete 30 credits of the Postgraduate Certificate in Higher Education (PGCHE) Course.

Informal enquiries may be addressed to Dr Violeta Sotirova, violeta.sotirova@nottingham.ac.uk

Please note that applications sent directly to this email address will not be accepted.

Further information about the School is available at: <http://www.nottingham.ac.uk/english>

Selection Process

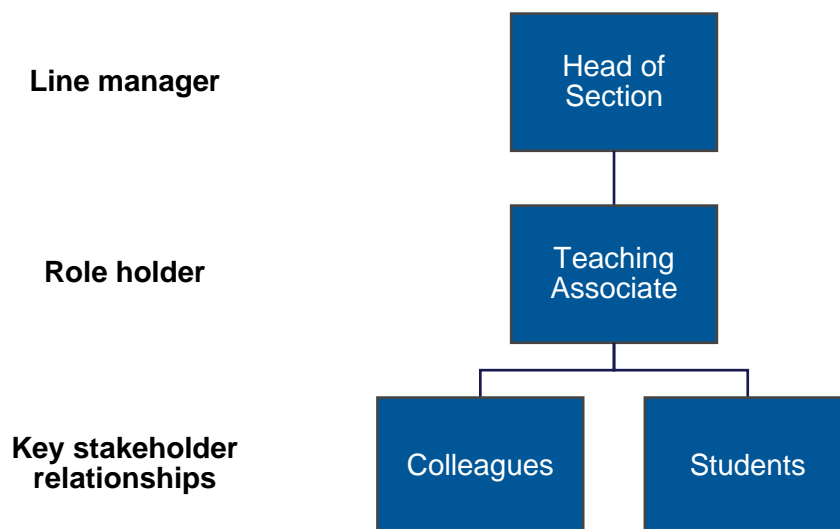
The interview process will include a presentation of teaching and a formal interview.

Expectations and behaviours

The University has developed a clear set of core expectations and behaviours that our people should be demonstrating in their work, and as ambassadors of the University's strategy, vision and values. The following are essential to the role:

- Valuing people** Is always equitable and fair and works with integrity. Proactively looks for ways to develop the team and is comfortable providing clarity by explaining the rationale behind decisions.
- Taking ownership** Is highly self-aware, looking for ways to improve, both taking on board and offering constructive feedback. Inspires others to take accountability for their own areas.
- Forward thinking** Driven to question the status quo and explore new ideas, supporting the team to "lead the way" in terms of know-how and learning.
- Professional pride** Sets the bar high with quality systems and control measures in place. Demands high standards of others identifying and addressing any gaps to enhance the overall performance.
- Always inclusive** Ensures accessibility to the wider community, actively encouraging inclusion and seeking to involve others. Ensures others always consider the wider context when sharing information making full use of networks and connections.

Key relationships with others



Information about English Language and Applied Linguistics teaching and research in the School of English

At the University of Nottingham, the focus of work in English language and linguistics has primarily been on:

- cognitive, psychological, sociolinguistic and stylistic analysis of language and discourse
- corpus linguistics
- professional communication with specialisation in business and health communication
- literary theory and literary linguistic text analysis/stylistics and cognitive poetics
- teaching English as a second/foreign language
- interdisciplinary approaches to a wide range of issues in applied linguistics and SLA research

Nottingham's distinctive approach is focused on the social and cultural contexts in which the English language is acquired, produced and understood, and on the psychological factors that underlie these processes.

The Interdisciplinary Ethos of Nottingham

Applied Linguistics is an interdisciplinary area of research, touching as it does on aspects of psychology, sociology, education, modern languages, literature, historical studies, and computational science. The Centre for Research in Applied Linguistics (CRAL), which includes a number of interdisciplinary research groups, is housed in the School of English. CRAL's infrastructure supports corpus-based research, discourse-based sociolinguistic data analysis, multi-modal data capture and analysis, eye-tracking, and behavioural response time experiments.

Web-based Distance Learning

Over the last few years, the School has invested in the development of web-based e-learning materials, a pioneering move led by staff in the English Language and Applied Linguistics section and now involving all areas of the School. We currently offer several of our Masters courses as web materials (MAs in Applied Linguistics, Applied Linguistics and English Language Teaching, English Studies and Health Communication, Modern English Language, and Literary Linguistics and pathways through the Applied English programme), and we currently have over 200 distance students based in over 40 countries across the globe.

Existing Research Strengths

Research within Nottingham's School of English is concentrated in the Centre for Research in Applied Linguistics (CRAL). Research groups within CRAL include the Psychology of the Language Learner Research Group (directed by Zoltán Dörnyei), the Bilingualism Research Group (directed by Kathy Conklin and Walter van Heuven in Psychology), Literary Linguistics group (directed by Peter Stockwell and Violeta

Sotirova), Health Language Research Group (directed by Kevin Harvey, Svenja Adolphs and Louise Mullany), Linguistic Profiling for Professionals (LiPP) (directed by Louise Mullany) and the Corpus Linguistics Workshop.

We have a sister research centre, CRALC (Centre for Research in Applied Linguistics, China) at The University of Nottingham's Ningbo campus (UNNC).

Teaching areas in English Language and Applied Linguistics

Teaching within the field of English Language and Applied Linguistics currently includes Undergraduate modules such as *The Psychology of Bilingualism and Language Learning*, *Teaching English as a Foreign Language*, *Language Development*, *Language and the Mind*, *Discourse and Society*, *Texts in a Digital World*, *Cognitive Poetics*, *Stylistics and Literary Linguistics*. We have four popular Masters programmes taught on site within the School (*MA Applied Linguistics*, *MA Applied Linguistics and ELT*, *MA Literary Linguistics* and an innovative *MSc Communication and Entrepreneurship* (co-taught with the University's Business School). We also contribute to an interdisciplinary MA in English Studies. In addition, we run a highly successful suite of Masters programmes by Distance Learning (see above) and we provide supervision to a thriving postgraduate research student community of around 40 students.

English Language and Applied Linguistics Staff in the School of English

The field of English Language and Applied Linguistics has seen strong growth on several fronts in the past five years. Investment by the School and the University in this area of teaching and research has both strengthened research profiles and helped considerably in meeting School and University international recruitment targets. The English Language and Applied Linguistics area of the School of English currently includes the following members of staff:

Chairs - **Svenja Adolphs**, **Kathy Conklin**, **Zoltán Dörnyei**, **Louise Mullany** and **Peter Stockwell**;

Associate Professors - **Kevin Harvey**, **Lucy Jones** and **Violeta Sotirova**;

Assistant Professors/Lecturers - **Sarah Grandage**, **Daniel Hunt**, **Christine Muir**, **Pawel Szudarski**, **Dominic Thompson** and **Jason Whitt**;

Research Fellows - **Jacqueline Cordell** and **Jai Mackenzie**;

Teaching Associates - **Malgorzata Chalupnik** and **Jessica Norledge**.

In addition, we have research support from Emeritus Professor **Mike McCarthy** and Honorary Professor (**Katie Wales**).

General Information

The School of English

The School is organised internally across four sections, covering Modern Literature, Medieval Language and Literature, Drama and Creative Writing, and English Language and Linguistics. Our undergraduate degrees are taught across these areas, ensuring that all Nottingham students have the opportunity for the widest possible education in English language, linguistics, literature and culture. This broad, rich coverage is a strong characteristic of the teaching ethos of the School.

The School of English was one of the first departments to be established when the University was formally opened in 1881 and is located on the ground floor of the Trent Building, University Park Campus. The Schools of English in Ningbo and in Malaysia are an integral part of the University's English provision, with many specific courses in common and a 2+2 degree between Nottingham and China.

At present, there are currently 63 staff in the research and teaching job family. We offer both Single and Joint Honours courses at BA level, a range of taught postgraduate Masters courses (many through web-based Distance Learning) and research supervision in all areas. We have approximately 950 undergraduate students, 95 undertaking on-site Masters programmes and 200 on distance learning Masters. There are approximately 70 full- and part-time research students working towards the higher degrees of PhD within a range of topics, with most full-time members of staff engaged in postgraduate supervision. These figures relate to our Nottingham campus. We also have Schools of English at the University of Nottingham campus in Ningbo, China and at the University of Nottingham in Malaysia.

Equality, Diversity and Inclusion (EDI) in the School of English

The school endeavours to create an environment that allows staff and students to thrive and excel in their education and career alike. We support equality, diversity and inclusivity in the school and are working hard to ensure a better representation of staff and students across all of our activities.

The School is engaged in a number of EDI initiatives including decolonising the curriculum in English studies:

<https://www.nottingham.ac.uk/english/about/equality-diversity-and-inclusion/decolonising-the-curriculum-in-english-studies-at-uon.aspx>

Teaching in the School

Undergraduate teaching

English Language and Applied Linguistics

Medieval Studies (including the history of the language)

Literature from 1500 to the present day (including literary theory)

Drama and Performance

Creative Writing

The curriculum emphasises a wide range of disciplines within the general areas of English, in which Year 1 operates as a foundation year introducing the students to these disciplines, while in Years 2 and 3 students progressively select a range of specialist modules.

Masters Programmes - onsite

The School offers a number of specialist on-campus taught Masters programmes including Applied Linguistics, Applied Linguistics and English Language Teaching; Literary Linguistics; Viking and Anglo-Saxon Studies; English Literature; and Creative Writing. In addition, the MA in English Studies allows students to combine modules from different areas, particularly language, literature and medieval studies. We also have a joint Masters programmes with the Nottingham University Business School, the MA in Communication and Entrepreneurship.

Masters Programmes - web-based distance-learning

Over the last few years, the School has invested in the development of web-based learning materials, a pioneering move led by staff in the English Language and Applied Linguistics section and now involving all areas of the School. Within the new Applied English scheme we are able to offer 'pods' of study that can be configured into one of 10 possible Masters programmes, including MA English Literature, MA Modern and Contemporary Literature, MA Applied Linguistics and MA Medieval Englishes and many others. We currently have over 200 distance students based in over 40 countries.

Research in the School

The following research groupings in the School form a focus for lectures, conferences, seminars, grant applications and other collaborative activities:

Centre for Research in Applied Linguistics (CRAL) is an interdepartmental research unit comprised of scholars from the School of English, Computer Science, Mathematics, Psychology, and Education. The School also houses two of the largest corpora of spoken English and spoken business English in the world, both funded in co-operation with Cambridge University. Academic and research staff from the School form part of a recently established professional communication research cluster and business unit, *Linguistic Profiling for Professionals* (LiPP), based in CRAL to provide bespoke consultancy and training.

Centre for Regional Literature and Culture (CRLC) involves a series of fresh initiatives relating to regional cultures at both local (i.e. East Midlands) and national levels. The Centre encompasses work on Byron, Southey, the interdisciplinary Landscape, Space, Place Research Group, and the DH Lawrence Research Centre.

Centre for the Study of the Viking Age (CSVA) fosters, develops and coordinates research into all aspects of the Viking Age, with special emphasis on Scandinavian contacts with the British Isles, and on literary and linguistic sources for the period.

Institute for Name-Studies (INS) was established in September 2002 as an umbrella for the various research activities of the *English Place-Name Society* (founded 1923) and the *Centre for English Name-Studies* (established 1992). The Institute for Name-Studies houses the library and research resources of the *English Place-Name Society*.

The School has been successful in attracting substantial funding from The Leverhulme Trust, the AHRC, the British Academy, ESRC, EPSRC, the Wellcome Institute, JISC and other external bodies. The University has a number of internal research funding schemes and support for both internal and external funding applications is provided by the University's Centre for Advanced Studies (CAS).

Careers and Employability

The School of English was awarded a prestigious Teaching Development Grant by the Higher Education Academy for our project, 'Embedding Employability in English: work related learning in the creative industries', to address two key challenges:

- How we can create opportunities for our students to develop vocational skills and experience work-related learning in the context of the particular skills and knowledges being developed through their subject-based study of English
- How we can ensure that such work-related activity is appropriately framed and supported to ensure 'learning' takes place, particularly as the numbers of students involved increases.

The School's Director of Employability oversees our work to develop placements, volunteering and employability opportunities for all students. The School's volunteering programme includes community and dementia reading groups, and the Literacy Support Project and the Viking and Anglo Saxons for Schools projects working with local secondary and primary schools.

The City of Nottingham

Nottingham is an attractive, vibrant and prosperous city, that attracts people from all over the UK. Culturally, it was awarded UNESCO City of Literature status 5 years ago; it has good theatres, an arena which attracts both national and international performers and a range of historical interests relating to subjects such as the lace industry, Lord Byron and DH Lawrence.

Nottingham is also known for sport, being the home of Trent Bridge Cricket Ground, Nottingham Forest and Notts County Football Clubs, the National Water Sports Centre and the Nottingham Tennis Centre. There is excellent public transport with buses and a tram service, a good network of roads with easy access to the M1 and the A1, a fast frequent rail service to London and other major cities. Nottingham East Midlands Airport is eighteen miles away.

The city is set within a county of outstanding natural beauty which includes Sherwood Forest, Wollaton Park, lively market towns and wonderful historic buildings, and is close to the southern Peak District. Housing is relatively inexpensive by UK standards and, in addition to the two Universities, there are excellent local schools and colleges.

To find out more about Nottingham, please use the following links:

Nottingham County Council – Tourism <http://www.experiencenottinghamshire.com/>

University of Nottingham <http://www.nottingham.ac.uk>

My Nottingham (information on schools, term dates, school transport etc.):

<http://www.nottinghamcity.gov.uk>

The University and the Faculty

The University of Nottingham has award-winning campuses in the United Kingdom, China and Malaysia and hosts a truly global academic community in all three countries. The University was placed 99th in the world (2021 QS World University Rankings) and placed 8th in the UK for research power (REF2014). The University has also been recognised as delivering Gold standard in the Teaching and Excellence Framework (TEF).

The Faculty of Arts is a large and diverse Faculty encompassing the School of Cultures, Languages and Area Studies (CLAS), School of English, and School of Humanities. The Faculty is home to associated Centres and Institutes, and the lead member of the Midlands4Cities AHRC Doctoral Training Partnership.

The research carried out through the Faculty is of the highest standard: in REF2014 more than 97% of research was of international quality, with 72% graded as 'world-leading' or 'internationally excellent' and five of the 11 units submitted were in the top 10 by research power.

We place a high value on research-led teaching and are committed to excellence in education and student experience.

For further information about the University, see:

<http://www.nottingham.ac.uk>

For campus maps and other information, see:

<http://www.nottingham.ac.uk/about/campuses/maps.php>

June 2021