

Job title	Teaching Associate (Fixed-term)	Job family and level	Research and Teaching Level 4 (Teaching Focus)
School/ Department	School of Law	Location	University Park Campus

Purpose of role

The primary purpose of the role will be to undertake teaching and provide advice as a member of a teaching team within an established programme of study. You will also help to develop new course proposals and may contribute to curriculum development in the School.

You will be expected to contribute to teaching in Land Law, and if possible, in one or more of the following subjects: Law of Trusts, Law of Contract, Public Law, Tort, Criminal Law, EU Law.

You will have specific responsibility for identifying the learning needs of students and ensuring that the content, methods of delivery and learning materials meet the defined learning objectives of courses.

You will be involved in the development of new teaching and assessment practices and/ or developing systematic methods for evaluating and disseminating these practises within the School.

You will also contribute to the School by carrying out a number of administrative duties.

	Main responsibilities (Primary accountabilities and responsibilities expected to fulfil the role)	% time per year
1	<p>Teaching and Learning</p> <ul style="list-style-type: none"> To plan and manage own teaching, and work as a member of a teaching team, within the School of Law in one or more of the following core subjects; Land Law, Law of Trusts, Law of Contract, Public Law, Tort, Criminal Law, EU Law. To undertake teaching development, preparation and delivery, tutorial teaching, setting of assessments and examinations, marking and feedback. To continuously evaluate teaching content, delivery methods and assessment methods and make improvements. To contribute to the School's national and international reputation in teaching through contributions to scholarly debate and discussion. To identify and investigate issues which relate to teaching and learning in area of expertise both individually and collaboratively. To build internal and external relationships in order to share information, identify potential sources of funds and/ or opportunities for collaboration for teaching innovation, enhancement projects or for own teaching development activities. 	55%
2	Supervision and Support	15%

	<ul style="list-style-type: none"> • To act as a personal tutor to enhance the student learning experience and their individual academic development. • To provide pastoral care to students, providing advice and support relating to their studies. • To supervise and assess undergraduate student projects. • To supervise postgraduate taught student projects, depending on area of expertise. 	
3	<p>Administration</p> <ul style="list-style-type: none"> ▪ To contribute to the effective management and administration of the School by performing duties allocated by the Head of School. ▪ To contribute to organising resources and effective decision making in support of teaching. ▪ To maintain records and materials in support of teaching activities. ▪ To develop and continually update knowledge and understanding and to seek ways of improving own performance by reflecting on pedagogical teaching design, delivery and obtaining and analysing feedback in order to develop own teaching and learning skills. 	30%
6	Any other duties appropriate to the level of the role holder	

Updated June 2020

Person specification

	Essential	Desirable
Skills	<ul style="list-style-type: none"> ▪ Excellent oral and written communication skills, including presentation skills, with the ability to communicate complex information with clarity. ▪ High analytical ability to facilitate conceptual thinking, innovation and creativity ▪ Ability to creatively apply relevant approaches to teaching and learning support. ▪ Ability to assess and organise resource requirements and deploy effectively. ▪ Ability to build relationships and collaborate with others, both internally and externally. ▪ The ability to work both independently and collaboratively. ▪ The ability to manage a varied and demanding workload that is subject to tight deadlines ▪ Good IT skills 	<ul style="list-style-type: none"> ▪ Ability to design course materials and plan and organise the delivery and assessment of taught courses within an agreed quality framework.
Knowledge and experience	<ul style="list-style-type: none"> ▪ An excellent understanding of working with students from a wide range of cultural and ethnic backgrounds and with students with different needs 	<ul style="list-style-type: none"> ▪ Previous teaching experience of small groups at Higher Education level. ▪ Experience of university teaching and assessment in relevant law subjects
Qualifications, certification and training (relevant to role)	<ul style="list-style-type: none"> ▪ Excellent legal qualifications at degree or equivalent level. 	<ul style="list-style-type: none"> ▪ PhD (or due to submit) in Law ▪ 30 credits of a UK Postgraduate Teaching Certificate or Education-related Masters, or equivalent. ▪ Higher Education Academy Fellow status or equivalent nationally recognised status for Higher Education teaching from another country.



The University of Nottingham is focused on embedding equality, diversity and inclusion in all that we do. As part of this, we welcome a diverse population to join our work force and therefore encourage applicants from all communities, particularly those with protected characteristics under the Equality Act 2010.



The School of Law holds a Bronze Athena SWAN award in recognition of our achievements in promoting and advancing these principles.

Expectations and behaviours

The University has developed a clear set of core expectations and behaviours that our people should be demonstrating in their work, and as ambassadors of the University's strategy, vision and values. The following are essential to the role:

Valuing people

Is friendly, engaging and receptive, putting others at ease. Actively listens to others and goes out of way to ensure people feel valued, developed and supported.

Taking ownership

Is clear on what needs to be done encouraging others to take ownership. Takes action when required, being mindful of important aspects such as Health & Safety, Equality, Diversity & Inclusion, and other considerations.

Forward thinking

Drives the development, sharing and implementation of new ideas and improvements to support strategic objectives. Engages others in the improvement process.

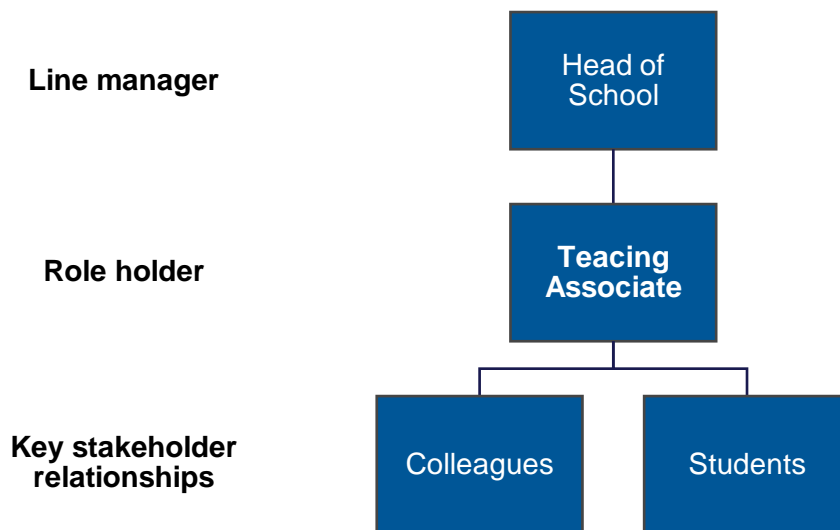
Professional pride

Is professional in approach and style, setting an example to others; strives to demonstrate excellence through development of self, others and effective working practices.

Always inclusive

Builds effective working relationships, recognising and including the contribution of others; promotes inclusion and inclusive practices within own work area.

Key relationships with others



UNIVERSITY OF NOTTINGHAM

A leading research institution

The University of Nottingham is a financially strong, research-led institution. In the 2014 Research Assessment Exercise, the University was ranked seventh in the UK in terms of research power, confirming the University's place as a leading member of the Russell Group of research intensive universities in the UK.

High quality teaching and learning

The provision of students with an outstanding and inspiring education is core to the mission of the School of Law. The School provides a rigorous, stretching and inspiring education for its undergraduates which prepares them for careers within and beyond the law. The University is also strongly committed to staff development through training, appraisal and excellent prospects for career advancement. Nottingham is one of the most popular universities in the UK in terms both of applicants per place available and also total number, with the School of Law also one of the most popular in terms of applicants per place available.

An attractive and popular campus

The University of Nottingham is located 5 kms west of Nottingham city centre, in a large campus of some 134 hectares, set in an attractive green-belt of woodland, parks and playing fields. The campus is an invaluable asset that helps the University to attract students of high calibre and provides an ideal environment for scholarly activities of all kinds. There are four campuses in and around Nottingham. The School of Law is located in the heart of the main University campus, in a building that also houses the School of Politics and International Relations and the School of Sociology and Social Policy. The University has two overseas campuses, at Seminyeh near Kuala Lumpur in Malaysia and at Ningbo, near Shanghai in the Peoples' Republic of China.

Administrative structure

Organisationally, the University of Nottingham has five Faculties: Arts, Social Sciences, Engineering, Medicine and Health Sciences, and Science. Within each Faculty are the Schools, Institutes and Departments. The School of Law is within the Faculty of Social Sciences and reports to the Faculty Pro-Vice- Chancellor.

SCHOOL OF LAW

The School is a unitary entity with no separate departments. The Head of School has primary responsibility within the School for interactions with the rest of the University. The Head of School is a professor within the School, who usually undertakes the role for three to five years, and who is appointed after consultation within the School.

The School has established a number of committees which have responsibility for various aspects of the School's activities. All staff undertake some administrative responsibilities, in conjunction with support staff, depending on their level and experience. The School aims to ensure that its decisions are transparent, accountable and conducted in a spirit of collegiality.

Candidates are encouraged to find out more about the School and its members of staff at: <http://www.nottingham.ac.uk/law>.

Research Environment

Excellence in research is a priority in the School of Law. The School was ranked sixth among UK Law Schools in REF 2014, in terms of both research power and intensity; and fifteenth in terms of GPA. Its profile was 37% 4*, 44% 3*, 18% 2* and 1% 1*. Members of the School are closely involved in the national and international scholarly community, and many of them have very high international reputations in their fields. The School encourages intellectual curiosity, original thought and engagement with outside organisations.

All members of staff receive generous financial support in terms of individual personal research allowances, which can be used to cover conferences, books, equipment or student research assistance, and there is regular study leave. In addition, members of the School have been successful in attracting significant research funding from such bodies as the Arts and Humanities Research Council, the Economic and Social Research Council, the British Academy, the Leverhulme Trust, government departments, international and national organisations and the private sector. The School is committed to developing further its record of high level research quality and securing research grants. Each new member of staff has a senior member of staff as a mentor and there are active Staff Research and Staff Development Committees.

The School houses a number of research centres, which are nationally and internationally recognised. These include the Human Rights Law Centre, which also provides a number of short courses for experienced professionals and engages in research and training projects around the world, the Public Procurement Research Group, the Commercial Law Centre, the Nottingham International Law and Security Centre and the Criminal Justice Research Centre.

Undergraduate Teaching

The School of Law is a vibrant, challenging and supportive environment, filled with enthusiastic, engaged students and passionate, dedicated staff. Our commitment to small group research engaged teaching means that our students are stretched, supported and thoroughly prepared for operating at the highest level, something which is ensured by rigorous assessment. The numerous channels for feedback to which students have access reveal the very high esteem in which students hold staff, and the employment outcomes demonstrate the high esteem in which employers hold the School's graduates. Embedded in the School is a culture that encourages, facilitates, recognises and rewards excellence whether delivered by staff or students.

The undergraduate courses on offer are rigorous and interesting, and cover a diverse range of subjects, with both core modules essential for practice as a lawyer and a wide choice of optional subjects. Core subjects tend to last a whole year, whilst optional modules tend to last for a semester. Staff members are encouraged to put forward proposals for new optional modules reflecting their research interests, ensuring that students have the opportunity to learn about subjects at the cutting edge of legal research.

The majority of our students study for the LLB degree, which allows students to take a limited number of non-law modules. We also have a BA (Law) degree, which allows students to take a wider range of non-law modules, and BA degrees in Law with French and French Law, Law with German and

German Law and Law with Spanish and Spanish Law. All these degree programmes lead to a qualifying law degree for professional purposes.

Our current undergraduate intake is about 300 students (although the intakes for 2018 and 2019 were higher than this), with the standard 'A' level offer for applicants being AAA, together with a good mark in the National Law Admissions Test (LNAT).

Some students are selected, at the beginning of their second year, to transfer to one of our many four-year Law degree programmes, which involves spending their third year abroad, studying at one of our partner law schools, before returning to Nottingham for the fourth year. These degrees include Law with American Law (the University of Texas at Austin or the University of Connecticut), Law with South East Asian Law (the National University of Singapore), Law with Chinese Law (the University of Hong Kong), Law with Australian Law (the Australian National University, the University of New South Wales, the University of Queensland, the University of Sydney or the University of Western Australia), Law with New Zealand Law (with the University of Auckland or the University of Canterbury) and Law with Canadian Law (the University of British Columbia or the University of Western Ontario).

Similarly, we have a Law with European Law degree, with the third year spent at one of a number of European universities with whom we have links under the European Erasmus exchange programme.

Postgraduate Taught Courses

The School has a very successful Masters of Law (LLM) programme. There are both general and specialist LLM degrees, including Public International Law, Human Rights Law, International Commercial Law, International Criminal Justice and Armed Conflict, European Law, Criminal Justice, and International Law and Development. As a result, there is a wide range of module choices available to students across the entire LLM programme. These different options reflect the research interests of staff, most of whom are involved in teaching on the LLM. All of our options are specifically designed for, and taught only for, the Masters Programme.

These LLM degrees attract students from all regions of the world, with the majority from outside the UK. As the places on the LLM are highly sought after, the quality of the students is generally very high. The teaching on the LLM is undertaken in small group seminars, enabling interactive teaching with student participation. Some seminars are conducted by visiting academics and by government or international organisation officials. A number of the options are full year, though the majority are taken over one semester only. Students also write a dissertation to be completed by September.

We also run part-time Executive Programmes in Public Procurement Law and Policy (Distance Learning), which have been very successful.

Postgraduate Research

The School has a vibrant research culture of which the postgraduate research (PGR) community is an integral part. The PGR programme is rich and vigorous. Each year the School accepts excellent candidates and awards most of them with substantial amount of funding to support their studies. Scholarship awards are made on the basis of academic merit and the strength of the proposed doctoral research and are available to students of all nationalities. When admitted, PGR students are assigned two supervisors including, if appropriate, a member of staff in another School in the

University. There are Annual Reviews of each student to monitor their progress and their supervision, and each student must give an annual presentation of their research. A range of research and other training is provided by the school and by the University's Graduate School. PGR students also benefit from the provision of a dedicated research room, with well-appointed individual research space, including personal computers connected to the high-speed network and the School intranet site.

Library Provision

Across all campuses, the University has nine libraries. The excellent Law Library is located in the main University Hallward Library, located next to our building, and it has in excess of 55,000 volumes, as well as immediate access to a very wide range of electronic materials and resources. The School allocates a portion of its budget each year to additional library purchases to reinforce its standing as a postgraduate and research library.

IT Provision

The School has excellent computing facilities and all members of staff are provided with a desktop computer, linked internally and externally to the University's high-speed network and the internet. Appropriate software for research and teaching purposes is provided as necessary. The University provides Office 365 for all staff. All staff have access to an initial 5TB of OneDrive storage, to communication and collaboration software such as Microsoft Teams and to productivity software such as Microsoft Project. The University has dedicated teams to assist staff members with digital teaching and learning and with digital research, and will soon be introducing an automated transcription service for colleagues undertaking empirical research. All students have access to computers within the University, with the School of Law Computer Room providing access to computers exclusively for Law students. A rolling programme of equipment upgrading and renewal ensures that the School remains at the forefront of IT provision.

ACADEMIC STAFF AND THEIR RESEARCH INTERESTS

(from January 2020)

Head of School

Professor of Comparative and International Penal Law

Dirk van Zyl Smit BA, LLB (Stellenbosch), PhD (Edinburgh), LLD (h.c) (Greifswald), Advocate (South Africa)

Sentencing, Punishment, International Criminal Justice.

Achilles Professor of Public Procurement Law and Policy

Sue Arrowsmith QC (hon), BA (Oxford), DJur (Osgoode Hall), MCIPS

Public Procurement, Sport Law and Governance.

Professor of Public Law

Stephen Bailey MA, LLB (Cambridge)

Constitutional and Administrative Law, Tort, English Legal System, Civil Liberties, Local Government Law.

Nottinghamshire Healthcare NHS Trust Professor of Mental Health Law

Peter Bartlett BA, MA (Toronto), LLB (Osgoode Hall), PhD (London), Barrister and Solicitor (Ontario)
Mental Health Law, Mental Capacity Law, related human rights law, related socio-legal history.

Professor of Public International Law

Olympia Bekou Degree in Law (Democritus University of Thrace), LLM (Cambridge), PhD (Nottingham),
Barrister and Solicitor (Greece).

Public International Law, International Criminal Law.

Hind Professor of Commercial Law

Howard Bennett LLB (Eng & Fr Law) (London), Maîtrise en Droit (Paris I), LLM (London), Barrister
Maritime Law, Insurance Law, International Trade Law, Agency, Contract.

JC Smith Professor of Law

Diane Birch OBE, LLB (Nottingham)

Evidence, Criminal Law, Criminal Justice.

Professor of Consumer Protection Law

Peter Cartwright LLB (Hull), MPhil, PhD (Wales)

Consumer and Investor Protection, Banking Law, Criminal Law, Commercial Law, Regulation.

Professor of Intellectual Property Law

Estelle Derclaye Lic. Droit (Liège), LLM (George Washington) DES (Liège/Katholieke, Leuven), PhD (London) Intellectual Property.

Professor of Law and Social Theory

David Fraser LLB (Laval), LLB (Dalhousie), LLM (Yale)

Legal Aspects of the Holocaust, Legal Theory, Modern and Contemporary Legal History, Jewish Legal History.

Professor of Law, Regulation and Governance

Richard Hyde LLB (Durham), LLM, MA (Nottingham)
Tort, Contract, Consumer Protection, Food Law and Technology.

Professor of Comparative Criminal Law and Procedure

John Jackson BA (Durham), BL (QUB), LLM (Wales), Barrister (NI), Barrister (Middle Temple)
Criminal Law, Evidence, Criminal Process, Human Rights, Constitutional Law and Jurisprudence.

Professor of European Law

Jeffrey Kenner LLB, LLM (London)
Law of the European Union, Employment Law.

Professor of Public International Law

Dino Kritsiotis LLB (Cardiff), LLM (Cambridge)
International Law, particularly the Use of Force and International Humanitarian Law.

Professor of Law and Development

Annamaria La Chimia LLB ("La Sapienza" Rome), LLM, PhD (Nottingham), Avvocato (Barrister and Solicitor) EU Law, Public Procurement, WTO Law, Aid and Development.

Professor of International Law and Human Rights

Robert McCorquodale LLB (Sydney), BEc (Sydney), LLM (Cambridge) PhD (Cambridge), Barrister and Bencher (Middle Temple)
Business and Human Rights, Right to Self-Determination.

Professor of International Human Rights Law

Dominic McGoldrick LLB (Nottingham), PhD (Nottingham), Barrister (Middle Temple)
Public International Law, International Human Rights Law, European Human Rights, UK Human Rights.

Professor of International Commercial Law

Irit Mevorach, LLB, LLM (Tel-Aviv), PhD (UCL), World Bank (consultant)
Company Law, Insolvency Law, International Insolvency, Private international Law.

Professor of Public International Law

Marko Milanovic LLB (Belgrade), LLM (Michigan), PhD (Cambridge)
European Convention on Human Rights, Law of Treaties.

Professor of Public Law

Alastair Mowbray LLB (Warwick), PhD (Edinburgh)
European Convention on Human Rights.

Professor of International Human Rights Law

Aoife Nolan LLB (Dublin), PhD (EUI)

International and Regional Human Rights Law, Constitutional Law, Children's Rights.

Professor of Criminal Jurisprudence

Paul Roberts BCL, MA (Oxford), MPhil (Cambridge)

Evidence & Proof, Criminal Procedure, Comparative Criminal Justice, Criminal Law Theory.

Professor of Law

Craig Rotherham LLB (Canterbury, NZ), LLM (Yale), PhD (Cambridge)

Property, Restitution, Legal Theory.

Professor of Law and Difference

Ralph Sandland BA (Kent), MPhil (Cambridge)

Legal Theory, Family Law, Criminology.

Professor of Intellectual Property Law

Paul Torremans Licentiaat Rechten (Leuven), Licentiaat Notariaat (Leuven) Geaggregeerde HSO en HOKT Rechten (Leuven), LLM, PhD (Leicester)

Intellectual Property, Private International Law.

Professor of Public International Law

Nigel White, MA (Oxford), PhD (Nottingham)

UN Law, Peacekeeping Law and Practice, Military Justice, Non-Proliferation Law.

Emeritus Professor in Residence and Co-Director of University of Nottingham Human Rights Law

Centre David J Harris CMG, LLM, PhD (London) Public International Law, Law of Civil Liberties, European Convention on Human Rights.

Senior Fellow in Public Procurement Law

Peter Trepte BA (Kent), Licence en Droit (Grenoble), PhD (Tilburg), Barrister

Public Procurement.

Associate Professors and Readers

Associate Professor and Reader in Company and Commercial Law

Sandra Frisby LLB, PhD (Nottingham)

Corporate Insolvency, Company Law, Commercial Law, Property Law.

Associate Professors

Luke R A Butler, LLB (Birmingham), LLM (Birmingham), PhD (Birmingham), PGDip (City University, London), Barrister

Public Procurement Law and Policy, Contract Law, Property Law

Christine Davis LLB, PhD (Nottingham), Solicitor

Property Law, Equity and Estoppel, Tax Law.

Narine Ghazaryan Bachelor's Degree in Law, Master's Degree in Private Law (Yerevan State University, Armenia) LLM, PhD (Nottingham)
EU Law, EU International Relations Law, Corporate Law.

Edward Goodwin BA (Oxford), LLM (Nottingham), PhD (Nottingham)
International Environmental Law, Heritage Law, Land Law, Trusts.
Róisín Mulgrew LLB (Galway), LLM (Nottingham), MA (Nottm), PhD (Nottm)
Contract Law, Land Law, Understanding Law, International Human Rights Law.

Sangeeta Shah BA and MJur (Durham)
Human Rights Law, Public International Law.

Andrea Tosato LLB (Pavia, Italy), LLM (Cambridge), PhD (Pavia, Italy), (Barrister and Solicitor).
Contract Law, Commercial Law, EU Law, Intellectual Property Law

Assistant Professors

Or Bassok LLB, LLM (Hebrew University), LLM, JSD (Yale Law School)
Public Law, Criminal Law, Constitutional Theory, Comparative Constitutional law.

Reza Beheshti LLB (Shiraz State University), LLM, PhD (Leicester)
Contracts, Sales, Private International Law, Contract Remedies

Cosmin Cercel LLB (Bucharest/Paris), MA & PhD (Panthéon-Sorbonne Paris I)
Comparative Law. Constitutional Theory, Legal Theory, Legal History and Critical Theory

Daria Davitti BA, MA (Bologna) LLM, PhD (Nottingham)
International Human Rights Law, Migration.

David Foster MA (Cambridge) PhD (Lond)
Legal History, Equity & Trusts, Land Law
Aris Georgopoulos LLB (Athens), PhD (Nottingham), Barrister and Solicitor
EU Law, Public Procurement Law, Competition Law, Public Law, International Trade Law and policy.

Bernd Justin Jütte LLB (Greifswald), LLM, PhD (Luxembourg)
Intellectual Property, Copyright, e-Commerce and Media Law.

Hemi Mistry LLB (hons), LLM, PhD (Nottingham)
International Criminal Law, Tort, Trusts.

Penelope (Nell) Munro LLB (Queen Mary), MA (Nottm), PhD (Nottm)
Mental Health Law, Socio-Legal Research Methodologies, Systems Theory.

Marianthi Pappa LLB (Thessaloniki) LLM, PhD (Aberdeen)
International Law of the Sea, Energy Law, Contract Law, Space Law.

Sanam Saidova BA, MA (Tashkent, Uzbekistan), LLM (UEA), PhD (Nottingham)
International Commercial Law, International Trade Finance, Contract Law, Law of Security Interests.

Christopher Sargeant LLB (Nottingham), LLM (Cambridge)
Land, Trusts, Crime, Public International Law

Candida Saunders LLB (Nottm), LLM (Nottm), MA (Nottm), PhD (Nottm)
Criminal Law, Justice and Evidence, Criminology, Penal Law/Penology, Research Methods.

Christy Shucksmith-Wesley LLB, LLM (Sheffield), MA, PhD (Nottingham)
Public International Law, International Humanitarian Law, Disaster Law

Judith Skillen BA (hons) (Cambridge), LLM (Queen's Belfast)

Klara Van der Ploeg BA, MA (Masaryk), LLM (Michigan) PhD (Geneva)
International Law, International Dispute Settlement, Non-State Entities in International Law,
International Investment Law.

Ping Wang LLB (Beijing, China), LLM (Nottingham), PhD (Nottingham)
Public Procurement, International Commercial Law, Chinese Law, European Law.

Qianlan Wu, BA (Beijing), MA (Chinese Academy of Social Sciences), LLM (Edinburgh), PhD (LSE)
International Competition Laws, Competition regulation, China and Chinese Law and Market
Governance

Teaching Associates

Timothy Masiko, LLB (Hons) (Uganda), MSc (Lund), PhD (Nottingham)

Principal Research Fellow

Vicky Kemp MPhil, PhD (Cambridge)

Access to Justice, Law and Technology, the Criminal Process, Youth Justice, Clinical Legal Education,
Discretion in Legal decision-making and research methods.

Research Fellows

Catherine Appleton BA (hons), MPhil (Cambridge), DPhil (Oxford)
Life Imprisonment, Ultimate Penalties, Prison Reform and Human Rights

Chloe Hocking

HRLC Research Fellow

Carla Buckley BSW Hons LLB (UNSW) LLM (Cambridge) Barrister-at-Law (Aust.)
Public International Law, European Convention on Human Rights

Revised December 2019